



Information about the product

Dimensions	820 x 796 cm
Safety zone	1120 x 1096 cm
Safety zone area	91 m ²
Overall height	329 cm
Free fall height	126 cm
Amount of users	28
Highest element	511 cm
Heaviest element	120 kg
Product complies with EN 1176-1:2017-12	Yes
Availability of spare parts	Yes
Age range	3-12

According to EN 1176-1:2017-12 norm, the product requires applying a safety surface according to the product's free fall height.



Functions



Climbing



Balancing



Sliding



Socializing

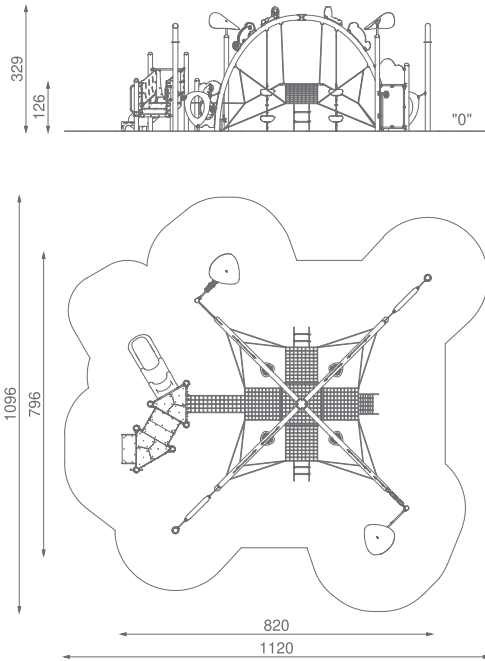
Technology



SHAPE
WAVE MASTER

A pipe-bending technique that allows for the maintenance of a smooth steel surface.

1:200

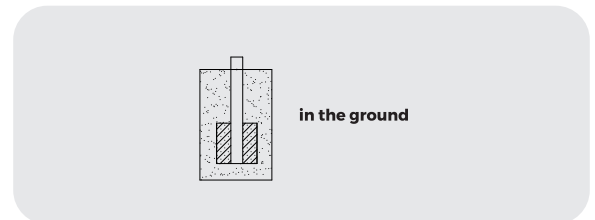


Due to the height of the free fall of the product, the EN 1176-1:2017-12 norm allows following types of fall- absorbing surfaces:

Material	Description	Minimal layer thickness mm
Bark	Chipped bark of coniferous trees (no wood-based materials), the size of the pieces between 20mm to 80mm	300
Wood chips	Mechanically fragmented wood without bark and leaves, size of the pieces between 5 mm to 30	300
Sand or gravel	Particle size between 0,25 mm to 8 mm	300
Synthetic material	Synthetic material with an approval for free fall heights ≥ 126 cm	

All types of surfaces need to be preserved by adding bulk material and removing extraneous matters. Broken glass is considered to be most hazardous.

Installation method



Warranty

 **10 years**

The Guaranty covers all flaws of the elements made of HPL, HDPE, stainless steel, hot-dip galvanized steel, wooden elements (pine, spruce), revealed during usage, which arise from manufacturing reasons.

 **5 years**

The Guaranty covers all flaws of the elements made of powder coated steel, aluminum, laminate, ropes, elements made in rotomoulding technology, elements made of polyamid, polypropylene elements, revealed during usage, which arise from manufacturing reasons.

 **2 years**

The Guaranty covers all flaws of the elements made of rubber, moving elements (bearings, joints), electronic elements, elements made of EPDM, elements made of plywood and other not mentioned before revealed during usage, which arise from manufacturing reasons.

Product description

Poles: 133 mm diameter pipes made of black steel (S235JR), cleaned through shot blasting and protected against corrosion by powder galvanising and powder coating.

Polyethylene Slides: Manufactured using the rotomoulding technology from LDPE.

Stairs and Platforms: Made of steel sheets, cleaned through shot blasting, powder galvanised and powder coated. Covered with 6 mm thick HPL anti-slip panels resistant to moisture and UV radiation.

Bars, Handrails, and Ladders: Made of stainless steel (AISI 304), cleaned in the process of bead blasting.

Wall Panels: Made of 15 mm thick coloured three-layer HDPE polyethylene.

Mushroom-shaped Steps: Feature a non-slip surface. Manufactured using the rotational moulding method from LDPE polyethylene.

Nets: Made of 16 mm diameter PP-multisplit polypropylene ropes with a steel core. Mounted to the poles using dedicated injection-moulded polyamide connectors.

Games and Activities:

-GEARWHEEL: Simply set all gears in motion to hear the sound of moving metal balls. The device is manually operated, so the sound intensity and ball speed depend on the user's strength. Made of 15 mm HDPE and 10 mm HPL panels, covered with safe polycarbonate, behind which metal balls are enclosed.

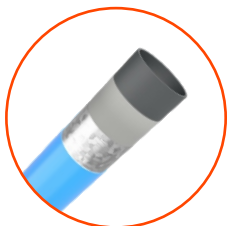
-TELEPHONE: Made of a 33.7 mm diameter tube and 15 mm thick HDPE panel.

All screws exposed to weather conditions are made of stainless steel.

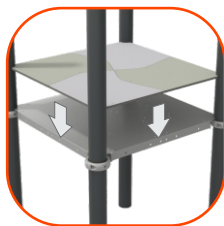
The device includes:

- 1x open modular slide
- 1x tower
- 1x steps
- 1x passage steps
- 1x climbing wall
- 1x large net
- 2x climbing ladder
- 2x hoop
- 1x telephone set
- 3x play panel
- 4x rope with rotomoulding steps

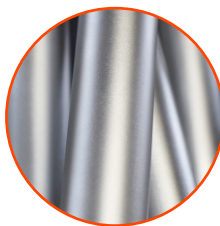
Materials



Steel construction:
Ø114 pipes, powder
Galvanized and covered
In powder coating paint



Platform:
Steel sheet galvanized
and covered with powder
coating paint + HPL 6 mm



Elements made of
stainless steel AISI304
totally resistant to various
weather conditions.



Wall panels made of high
quality, coloured triple-layer
HDPE 15 mm, resistant to
moisture and UV.



Wall panels made of
coloured, highest quality
HPL 13 mm, resistant to
moisture and UV.



Slides and roofs made using
Rotomoulding technique
using LDPE Material



16 mm diameter
polypropylene ropes pp-
multislip, with a steel core.



Elements made of LDPE
material using rotomoulding
technique.