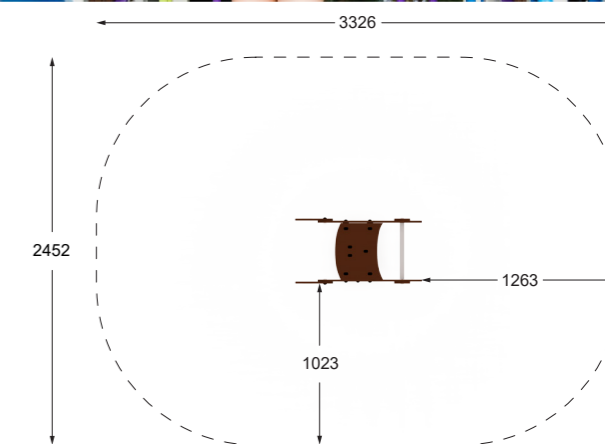
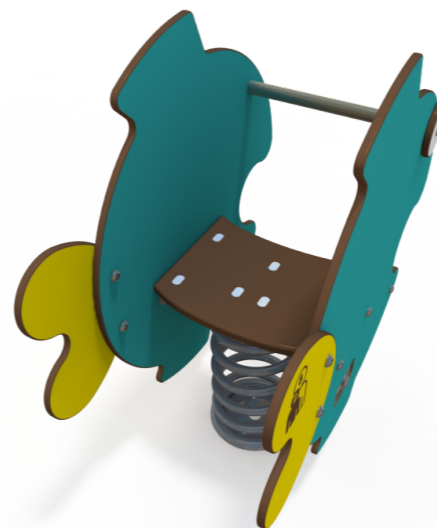
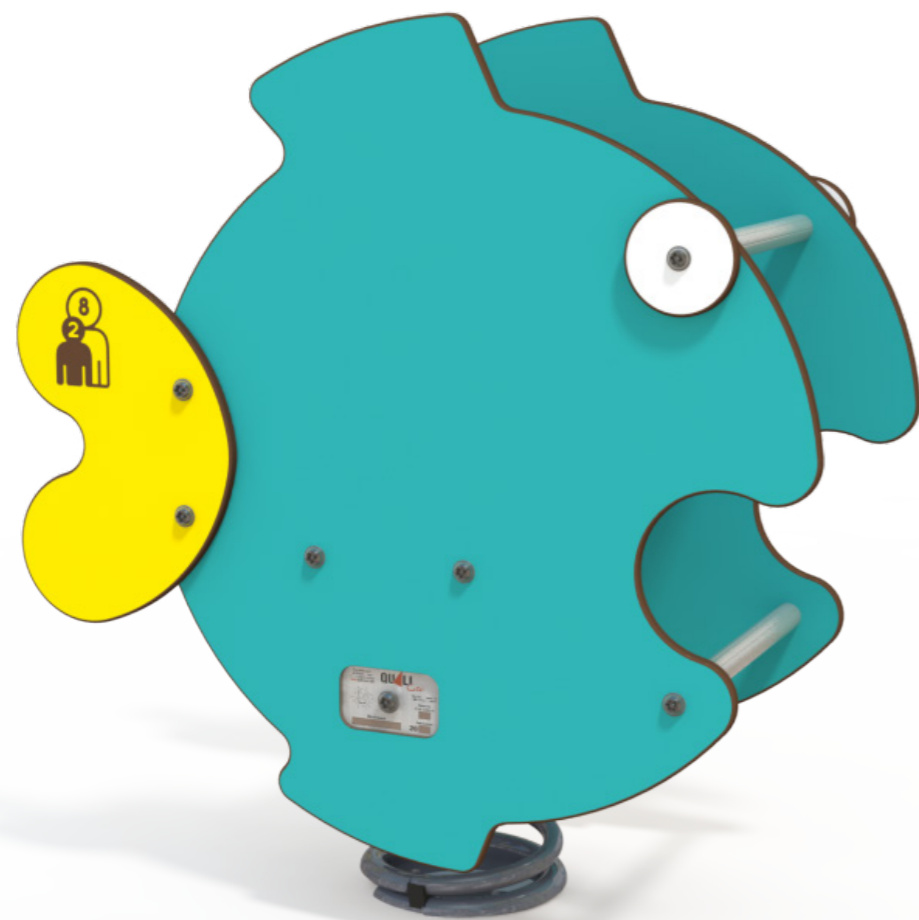


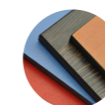
RE 226

Fish Springer | Product Sheet



Range:	Springers
Ages:	2+ yrs
Capacity:	1
Equipment Size:	W 0.42m D 0.79m H 0.84m
Max FHOF:	0.60m

Materials:



Compact Laminate Panels (HPL), made of duromer laminated at very high pressure with 2 coloured decorative sides with anti-graffiti and anti-UV treatment.



Springs are made of phosphate-protected micro beaded blasted steel with an epoxy finish and galvanised steel anchoring systems.



Bolts and screws made entirely from stainless steel, incorporated with a mechanical vandalism assembly system using Torx screws with anti-tamper pins.

Play Value:



Rocking



Balance



Role play

Colours:



RE 226-02



RE 226-03



RE 226-05



RE 226-06



RE 226-12



RE 226-14



RE 226-90



RE 226-91



RE 226-92



RE 226-93



RE 226-94



RE 226-95



RE 226-96



RE 226-97